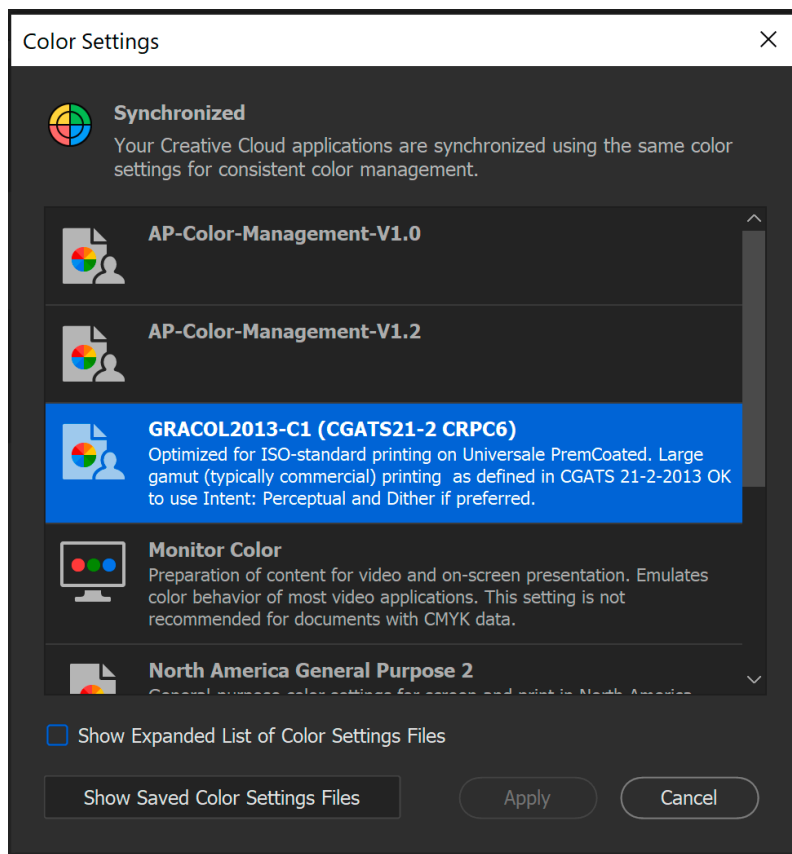


Step 1: Load the Preset in Adobe Bridge

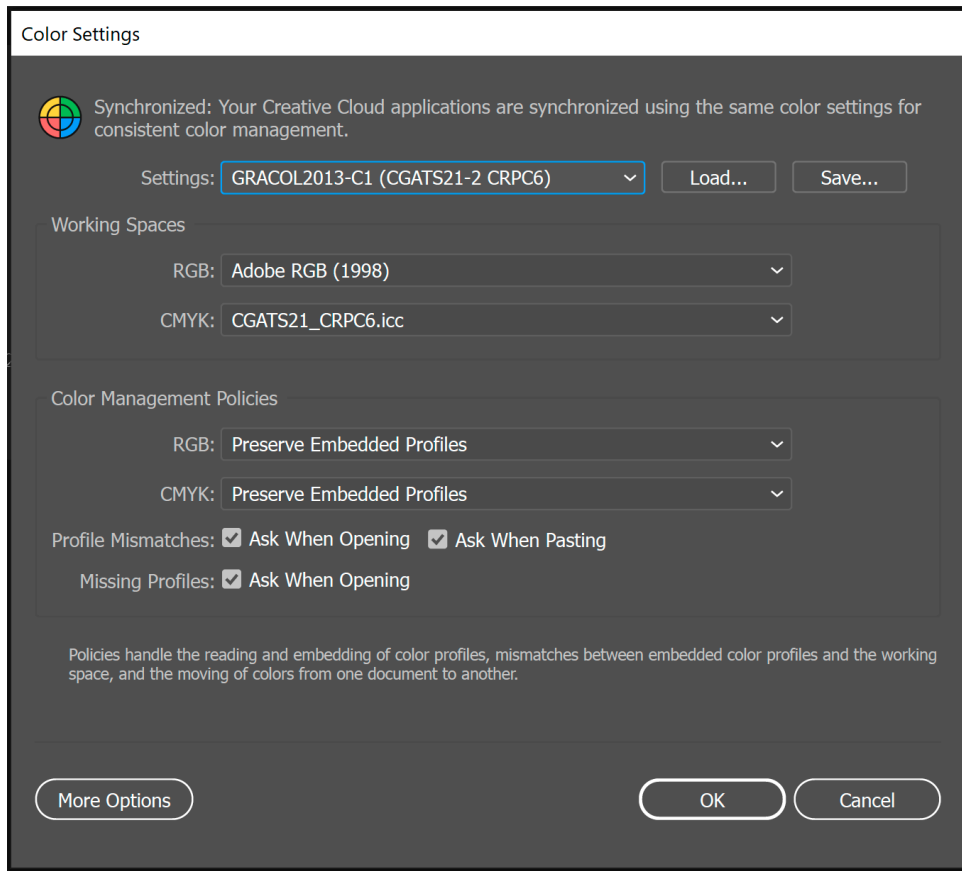
1. To begin, go to: *Edit > Color Settings*
3. Select the preset *GRACOL2013-C1 (CGATS21-2 CRPC6).csf*
4. Select *Apply*.

The file path for the .csf preset file in Windows is *C:\Users\<your username here>\AppData\Roaming\Adobe\Color\Settings* or for Mac it is *Users\<your username here>\Application Support\Adobe\Color\Settings*

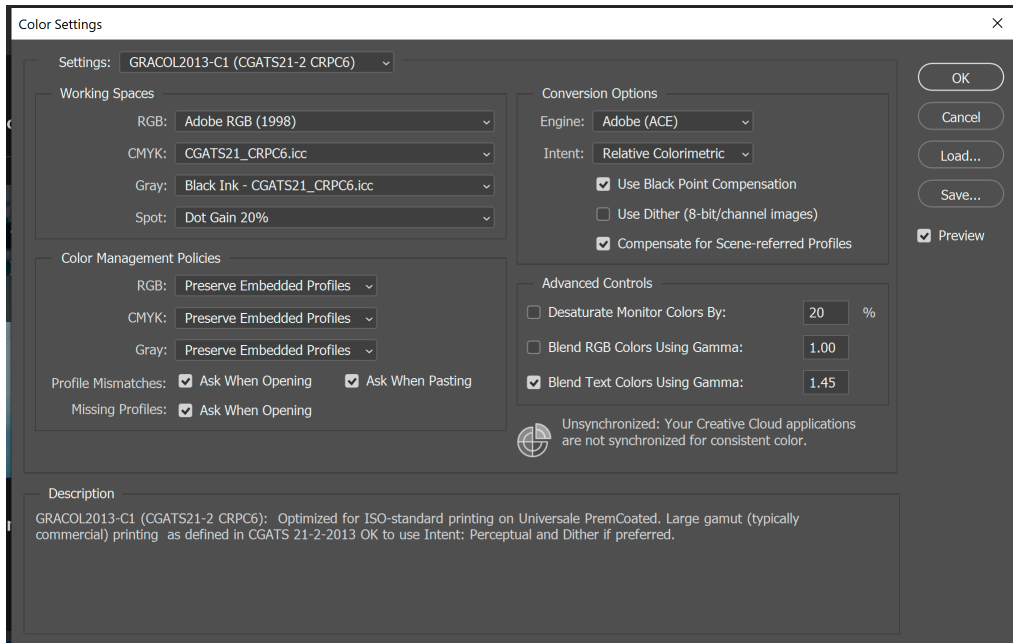
The file path for the CGATS21-2 CRPC6 profile in Windows is *C:\Windows\system32\spool\drivers\color* or for Mac it is *\Users\username\Library\ColorSync\Profiles*



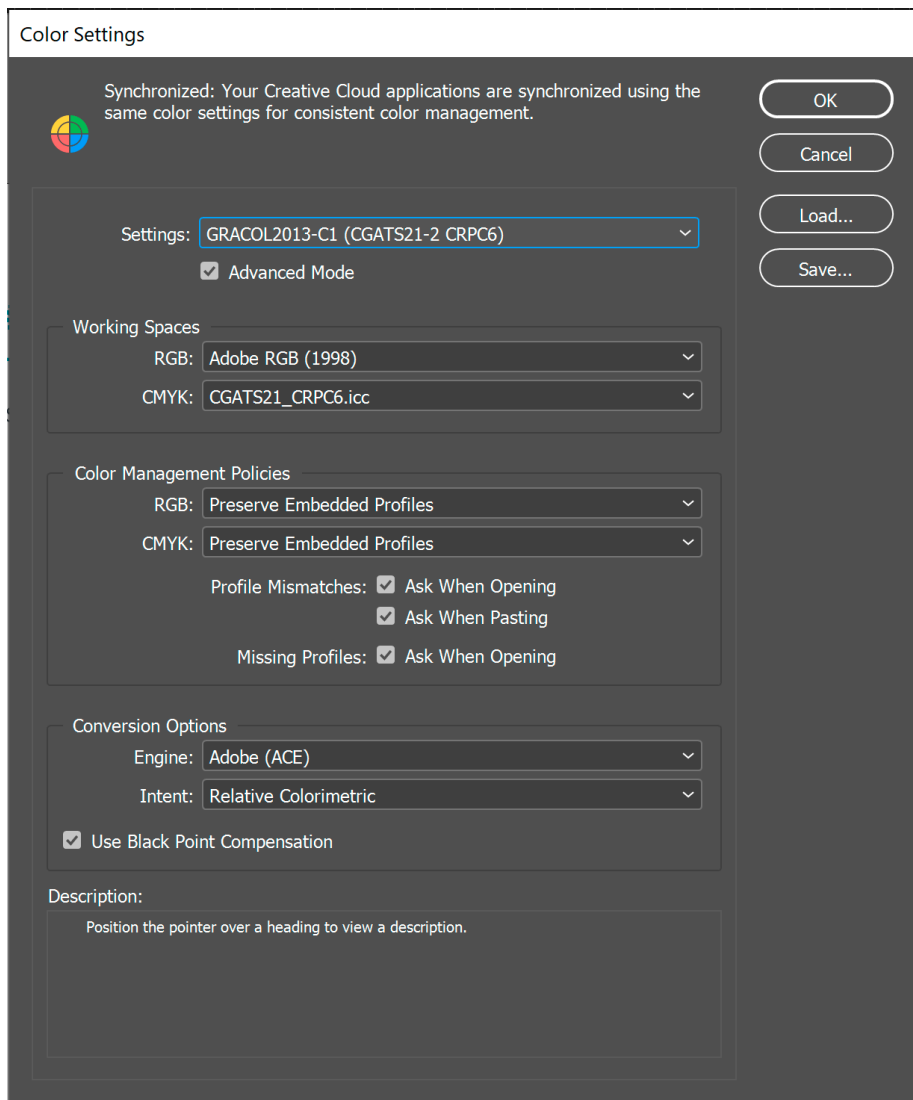
Bridge Settings



Illustrator Settings



Photoshop Settings



Indesign Settings